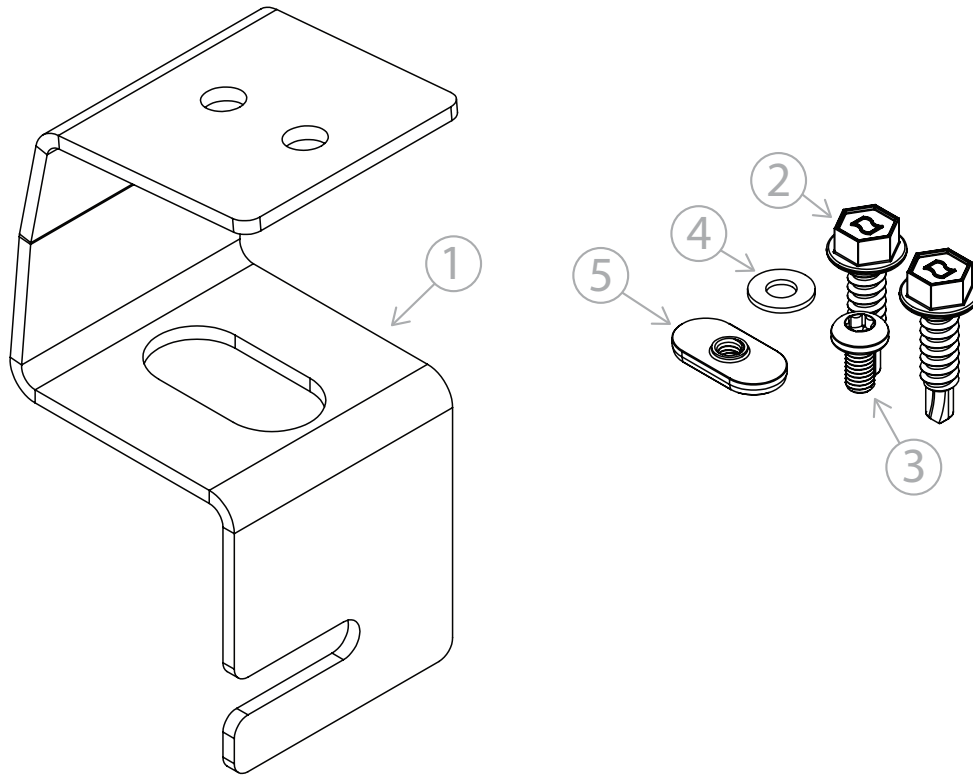


FORD F-150 REAR WINDOW MPOWER TRAFFIC CONTROLLER BRACKET

PMPTCM10



⚠ WARNING ⚠

- HIGH CURRENT interconnects must be properly terminated. Poor crimp quality can cause heat build-up and fire. Follow crimp connector manufacturer instructions.
- DO NOT install this product or route any wires in the Air Bag Deployment Zone. Refer to vehicle Owner's Manual for deployment zones.
- Do NOT use system to disconnect headlights, brake lights or other safety equipment.
- Unit may become hot to touch during normal operation.
- Failure to properly install connectors, fuses or wiring may cause vehicle failure or fire.
- Installation must only be performed by trained technician. Installer must determine vehicle wiring configuration and proper integration of system.
- Use proper wire gauge. All power wires connecting to positive (+) or negative (-) battery terminal or local chassis ground (-) must be sized to supply at least 125% of max. current and properly fused at power source.
- Install protective grommets when routing wire through firewall or metal.

INTRODUCTION.....	2
COMPONENTS	2
INSTALLATION INSTRUCTIONS	2
INSTALLATION IMAGES	2 - 3

⚠ WARNING

ROUTE WIRES ONLY IN LOCATIONS THAT ARE NOT SUBJECTED TO POTENTIAL WEAR. MAKE SURE TO AVOID ROUTING WIRES IN THE DEPLOYMENT AREA OF YOUR AIR BAG. REFER TO YOUR VEHICLE'S OWNER'S MANUAL FOR AIRBAG DEPLOYMENT ZONES.

**SoundOff
Signal**

800-338-7337 | soundoffsignal.com

NOTICE:

Installers and users must comply with all applicable federal, state and local laws regarding use and installation of warning devices. Improper use or installation may void warranty coverage. To review our Limited Warranty Statement & Return Policy for this or any SoundOff Signal product, visit our website at soundoffsignal.com/tech-services/returns/. If you have questions regarding this product, contact **Technical Services**, Monday - Friday, 8 a.m. to 5 p.m. ET at 800-338-7337 (press #4). Questions or comments that do not require immediate attention may be emailed to techservices@soundoffsignal.com.

ENHANCING SAFETY THROUGH INNOVATION

PMPTCM10 0225 REV A

Thank you for purchasing the Ford F150+ Rear Window mpower Traffic Controller Bracket Kit. Two bracket kits are required to mount on traffic controller.

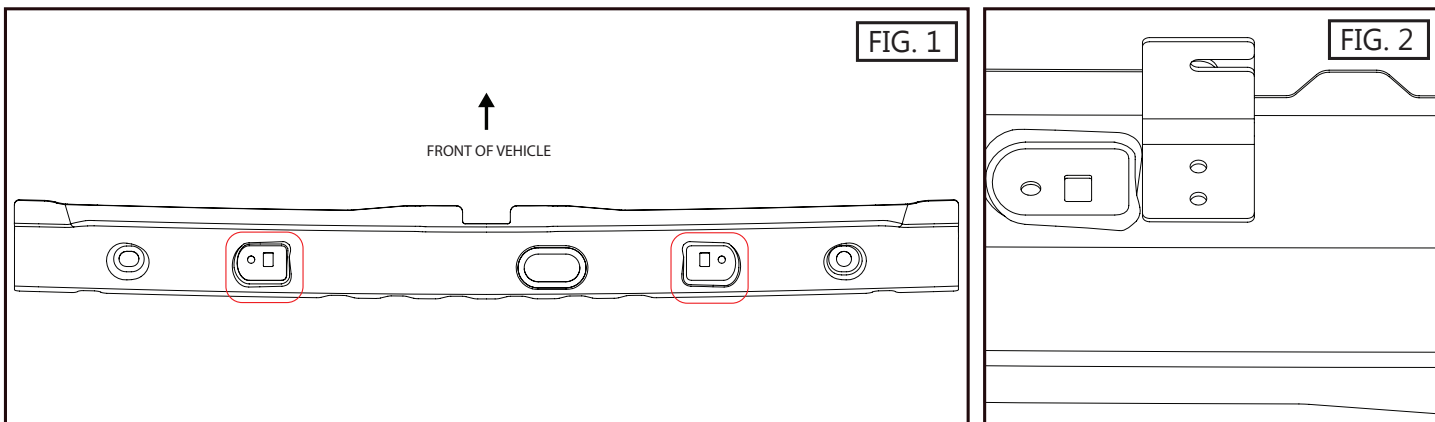
- 2021-2025 Ford F150
- 2023-2025 Ford F250/F350
- 2021-2025 F150 Lightning

NOTE: This kit is NOT compatible with sliding rear window.

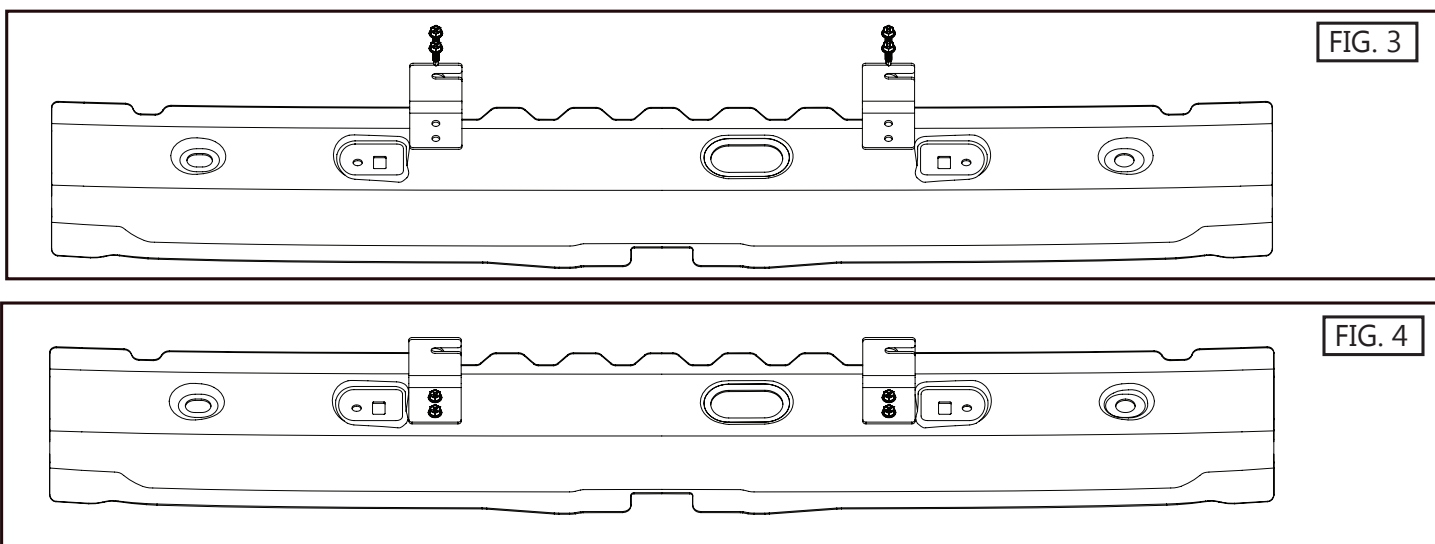
- mpower traffic controller 4 mod
- mpower traffic controller 5 mod
- mpower traffic controller 6 mod

CONTAINS		
ITEM #	COMPONENT	QTY.
1	Bracket	1
2	Self-drilling screw	2
3	Mounting bolt	1
4	Washer	1
5	Sliding nut	1
7	Installation sheet	1

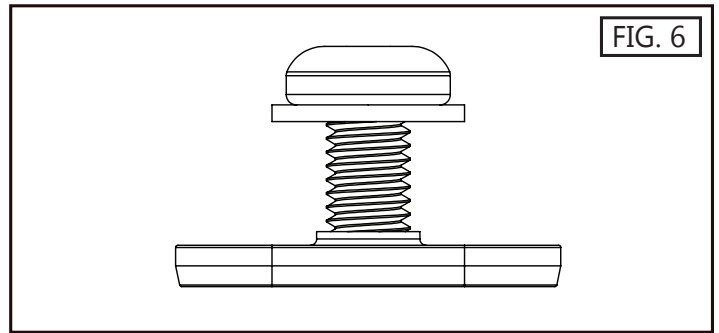
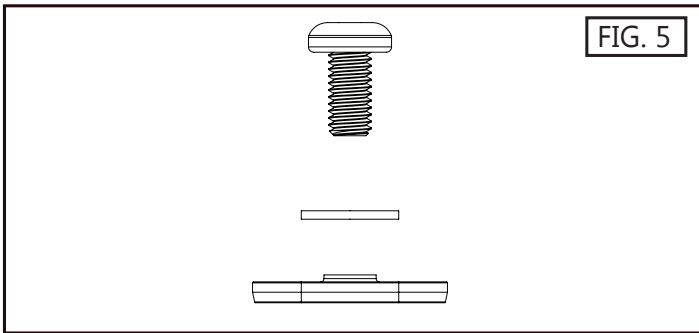
1. Lower the headliner from the rear of the vehicle.
2. Locate the headliner retention area of the C-pillar cross member. The edge of the bracket will be placed along the edge of the headliner retention area (See **FIG. 1**). The front edge of the bracket will be placed in line with the outside of the bracket (See **FIG. 2**). Use the holes in the bracket as a template to mark the hole location on the C-pillar cross member.



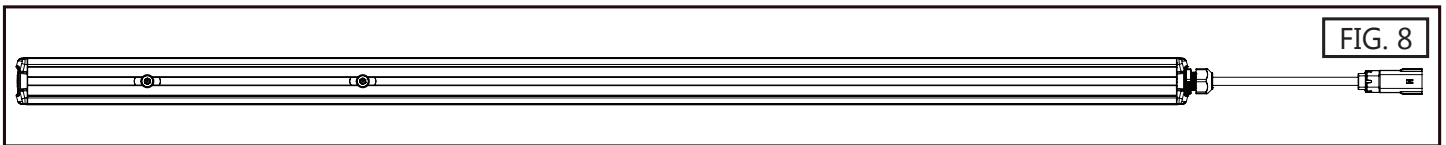
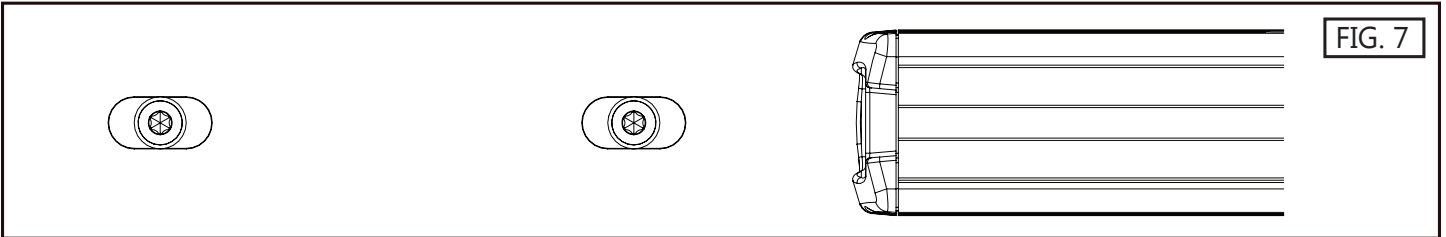
3. Drill a small pilot hole on the marks made in step 3.
4. Mount the bracket (item #1) to the C pillar using the self-drilling screws (item #2). The bracket has a hole cut in it to allow the fastener and tool to pass through (See **FIG. 3** and **FIG. 4**).



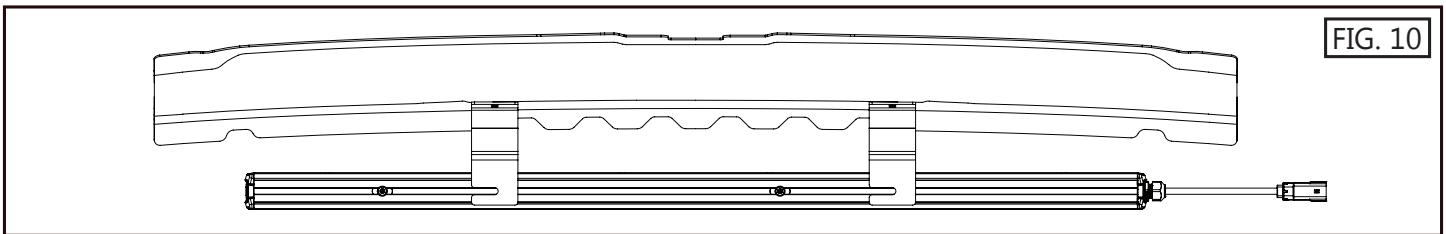
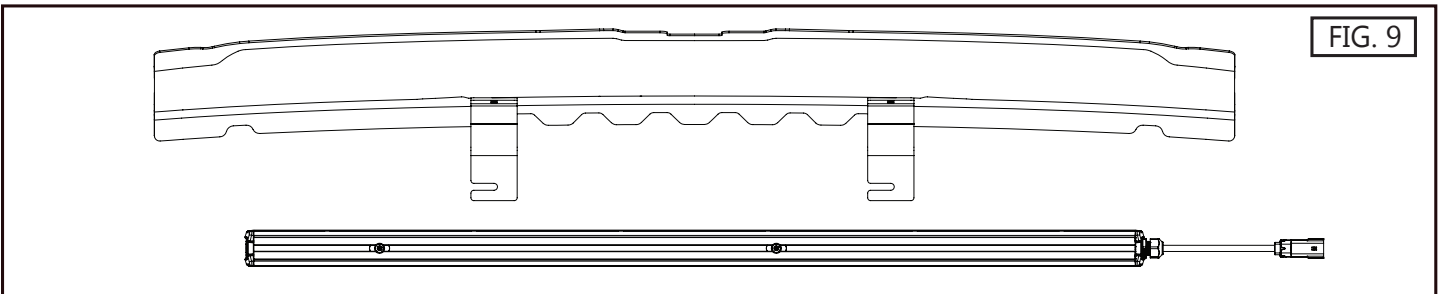
5. Apply thread locker to the mounting bolt (Item #3), place the washer (Item #4) on the mounting bolt, and thread onto the sliding nut (Item #5) (See **FIG. 5** and **FIG. 6**).



6. The sliding nut (Item #5) will go in the channel of the mpower traffic controller (See **FIG. 7** and **FIG. 8**).



7. Hold the traffic controller below the brackets (See **FIG. 9**). Move the sliding nut, washer, and bolt into the slot in the bracket (See **FIG. 10**). The washer (Item #4) will slide over the bracket. Tighten bolt to secure traffic controller.



8. Repeat on the opposite side of the vehicle (See **FIG. 11**).
9. Headline may need to be notched for bracket clearance. Reinstall headliner.

