

# Rapid Deployment Kit

## ETRDVK002



### Introduction:

The Rapid Deployment Kit (RDK) is a fully functional and portable lighting and siren warning system. Its flexibility allows for quick installation into most, if not all, modern vehicles without the need for vehicle modification to accommodate the system.

All tools needed for installation are included with the RDK.

### Special Notes & Warnings:

- This system should be operated with the lid in the open position to guarantee venting and adequate airflow.
- This system is calibrated for precisely the included equipment. Do not add to or modify the system design in any way.
- Once installed into the vehicle, be sure to secure the RDK case using a vehicle seatbelt. Treat this system as if it were an infant car seat during periods of vehicle movement.
- The RDK should be operated on a 15 Amp circuit for most use. In cases where the siren speaker is not connected or used it will run on a 10 Amp circuit.

## Operations Quick Reference



**Siren Control** - Cycles between Wail, Yelp, Tone, and Off Functions

### Slide Controls -

- 0 - Lights Off
- 1 - Rear Lights On
- 2 - Rear + Front Lights On
- 3 - All Lights On - Aggressive Pattern + White Flash

### Button Functions

- Button 1 - Forward Takedown Lights
- Button 2 - Left Alley Light
- Button 3 - Right Alley Light
- Button 4 - Cruise Mode
- Button 5 - Rear Scene Lights
- Button 6 - Multi Toggle Switches Warning Light Colors
  - First Press - All Blue Mode
  - Second Press - All Red Mode
  - Third Press - CA XIII Mode (Steady Red)
  - Off - Red & Blue Warning Functions

### Siren Momentary Controls

- HRN - Plays the airhorn tone while pressed
- MAN - Plays the Wail windup tone while pressed

## WARNING

- DO NOT operate siren inside of enclosure with lid closed under any conditions where the ambient temperature can exceed 65C or 149F. Operation with the lid open for venting is recommended.
- DO NOT modify any harnesses or add additional outputs to the system. Doing so may void the system warranty in its entirety.
- DO NOT install this product, or route any wires, in the Air Bag Deployment Zone. Treat it like an infant's car seat. We recommend restraining the unit in the back seat of the vehicle with a seat belt.
- DO NOT use system to disconnect headlights, brake lights or other safety equipment.
- Unit may become hot to the touch during normal operation.
- Failure to properly install connectors, fuses or wiring may cause vehicle failure or fire.
- Install protective grommets when routing wire through firewall or metal.

### NOTICE:

Installers and users must comply with all applicable federal, state and local laws regarding use and installation of warning devices.

Improper use or installation may void warranty coverage. To review our Limited Warranty Statement & Return Policy for this or any SoundOff Signal product, visit our website at <https://soundoffsignal.com/support-page/warranty/>. All returned items must be properly packed to prevent damage in transit.

If you have questions regarding this product, contact **Technical Services**, Monday - Friday, 8 a.m. to 5 p.m. at **1.800.338.7337** (press #4 to skip the automated message). Questions or comments that do not require immediate attention may be emailed to [techgroup@soundoffsignal.com](mailto:techgroup@soundoffsignal.com).



# Rapid Deployment Kit ETRDVK002

# Pre-Deployment Assembly Instructions

## Pre-Assembly - Lights and Shrouds:

Each light is labeled with the direction it is facing and an ID number. This facing information determines which light is placed at a specific facing:

- ID 31 - Left or Right Side
  - ID 32 - Front Passenger / Rear Driver
  - ID 33 - Front Driver / Rear Passenger
- ( Refer to the figure on the next page )

### Smaller Shrouds

1. Remove the smaller shrouds and ID 31 lights (ETRDMP001) from the plastic packaging.
2. Install the curved backing plate onto the light, and place the light with the backing plate into the shroud.
3. Using the wing nuts, tighten the light to the shroud assembly. Tighten enough that adjustments to the angle can be made later. Note: Two extra wing nuts are included per light.

4. Apply the foam and Dual-Lock anchors to the outer rim of the light assembly. Be sure to capture the wire in between the foam and the shroud assembly in the recessed area.
5. Repeat steps 1-4 for the other side facing light.

### Larger Shrouds

6. Remove the larger shrouds and ID 32 and 33 lights (ETRDMP003 & ETRDMP003) from the plastic packaging.
7. Assemble the backing plates to the lights as covered with step 2.
8. Place the ID 32 light on the left side with the light facing you. If there is any confusion, the smaller section of the shroud is considered up. Tighten the wing nuts as described in step 3.
9. Repeat steps 6-8 for the other light assembly.

Once all lights are assembled to the shrouds, they can be placed back into the trapezoid-shaped foam cavity for storage.



## Pre-Assembly - Control Amplifier

Pre-assembly of the control amplifier consists of a handful of connections. It is recommended to stretch out the harnesses so that all light plugs are on one side, and all siren connections are on the other side. The diagram to the right shows each connection described below.

The backside of the control amplifier has the connectors labeled (CN1, CN2, etc.), and there is also a label on the top of the amplifier showing the same.

There are seven total connections, five of which are in the main harness, and the other two are separate.

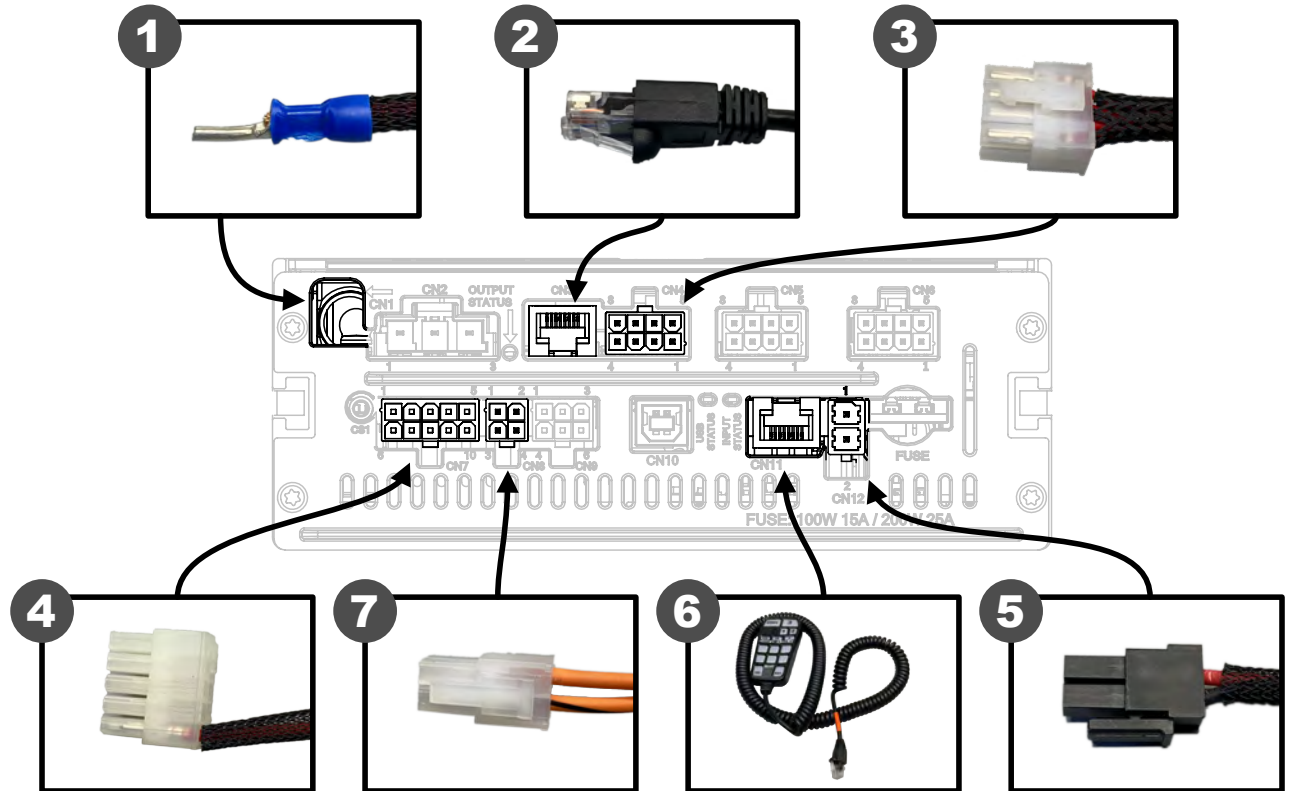
### Main Harness Connections:

1. The main power connection (CN1) is made under the lid of the control amplifier. The lid has two tangs that allow it to open up. There is a hex style screw down block for this connection, with a rubber protection boot. Using the included hex/screwdriver tool, tighten this ferrule down.
2. The Ethernet cable gets connected to the modular port CN3.
3. The eight position connector gets plugged into CN4.
4. The 10 position connector gets plugged into CN7.
5. The two position connector gets plugged into CN12.

### Standalone Connections:

6. The Control Panel gets connected to the modular port CN11.
7. The remaining four position siren speaker harness gets connected to CN8.

Once all connections are made, the control amplifier can be placed back into the foam cradle.



# Rapid Deployment Kit

## ETRDVK002

### Placing the RDK into the Vehicle:

We recommend placing the RDK in the back seat of a four-door vehicle. Once in the vehicle, open up the protective case lid.

Unstrap all harnesses, remove the hook and loop straps (save them for system storage), and stretch all harnesses out (leaving those connected during pre-assembly connected). There will be six harnesses:

- Front Window Lighting Harness (two connectors)
- Rear Window Lighting Harness (two connectors)
- Left Side Window Lighting Harness (one connector)
- Right Side Window Lighting Harness (one connector)
- Main Power Harness (Vehicle 12v Power Adapter)
- Siren Speaker Harness (one connector)

Route each of these harnesses to its approximate location. Route the wire outside the passenger front door for the siren speaker, paying attention to moving parts and pinch points.

*Important:* Route the wiring in areas that allow for the safe operation of the vehicle (i.e., no wiring near the driver pedals, airbags, or steering controls).

### Light Installation

The first time the RDK is used, the lights will need to be connected to the various lighting harnesses (front, rear, and right). This is easily done by inserting the light connector into the harness connector until a positive click is heard.

Then it is a matter of removing the adhesive cover strip from the light shroud and sticking the shroud to the glass. Ideally, stationary windows are the most suitable mounting location, but motorized windows can also be used. Repeat this process for all lights in the vehicle.

*Tip:* If the RDK is for very temporary use, you can partially remove the adhesive cover strip, leaving some adhesive covered. This makes removal much easier.

### Siren Speaker Installation

The remaining siren wiring harness can be routed down the passenger side under hood area, parallel to the right front fender. This is easiest to do with the hood open and should only take a few minutes to complete.

Find a suitable location to mount the speaker clamps, as shown in the pictures to the right. The clamps can be installed with either the u-bracket rounded side or the flat side of the clamp against the siren speaker bracket. The included adjustable wrench can be used to tighten and loosen as necessary.

This should be a sturdy location. Recommended locations include tow hooks, radiator support brackets & engine cross-members - depending on accessibility. We recommend using four nuts on each u-bracket, with a second nut on each leg acting as a jam nut to help prevent loosening from vibration.

Once mounted, connect the weatherproof connector between the harness and the speaker connector.

Regardless of the location, please pay special attention to where the wiring harness is run so that it does not interfere with moving engine parts or rest on top of or near high heat areas. Use the included hook and loop straps to secure any wiring during use.

*Note:* In some deployments, the siren speaker may not be desired for a variety of reasons. In these cases, the system can be utilized without the siren speaker, and we recommend leaving the siren speaker and harness packed away in the RDK case.

### Powering Up, Testing, & Securing The RDK

Once all the above is completed, connect the power cable to a vehicle 12v power adapter port. In some vehicles, the power port is activated by ignition.

Secure the RDK in the seat using the vehicle seat belt, using both the hip and shoulder straps. Securing the lid of the RDK open with the shoulder strap will ensure the control amplifier gets adequate airflow.

Once all is installed and secure, test the system functions, as it will be used in the field.

The RDK is now ready to use.

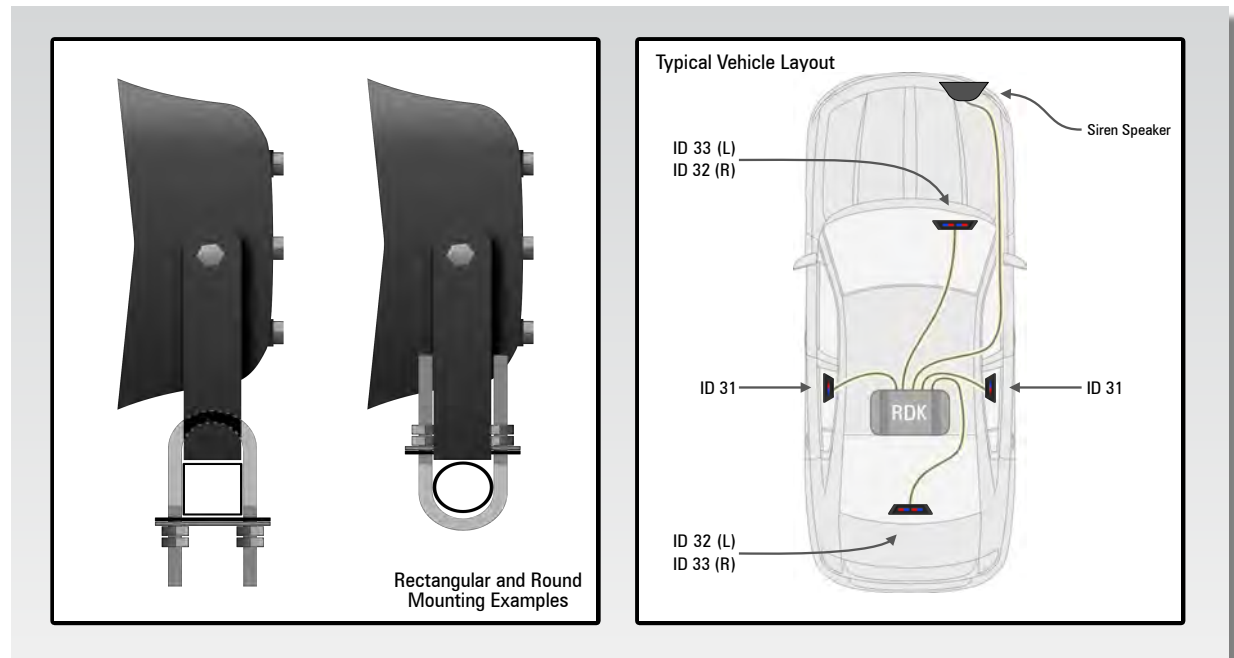
# Deployment Instructions

During extended deployment periods, we recommend unplugging the power cable when the vehicle is not in use.

*Note:* During use with both lights and siren active, the RDK can consume above 15A in some situations - a typical rating for a power port in many vehicles. This can result in a blown fuse for the power port on the hosting vehicle. Should a fuse blow in a vehicle, we recommend replacing the fuse per the manufacturers specifications and guidelines.

### Storage After Use

1. Disconnect power from the unit.
2. Unplug the speaker from the harness, and remove the speaker from the vehicle.
3. Remove the light shrouds from their mounting points. The Dual Lock strips will likely separate leaving half of the strip on the glass at this point. This is okay. The kit includes enough replacement strips for approximately 20 more installations, and extra strips can be ordered when necessary. If necessary, remove the adhesive strips from the vehicle's glass using a razor blade (not included).
4. Coil all harnesses and secure using the included hook and loop fasteners.
5. Neatly pack the individual components and harnesses back into the box.
6. Close and lock the lid. The RDK is now ready for storage.



# Rapid Deployment Kit ETRDVK002

# Technical Specifications, Warranty, and Replacement Parts

## Technical Specifications

General Information	
Case Dimensions	24.5" W x 18" D x 9" H
Handheld Control Panel	5" H x 2.5" W x 1" D
Input Voltage	10-16Vdc (Cigarette Style Power Plug)
System Weight (Including Case)	30 lbs.
Operating Temperature	-40°C to +65°C
Siren	
Input Current	20 Amps Fused @ 13.4 VDC - 100W System
Standby Current	Ignition ON - 500mA
	Ignition OFF - < 4mA
Output Power	1x100W RMS Max (11 Ohm Speaker)
Siren Frequency	675Hz - 1633Hz
Over Voltage Protection	Yes
California Title 13 Compliance	Button Sequence
Speaker Protection	Short & Open
Light & Siren Control	
Lights Included	ID 31 - Red, Blue, White - Qty 2
	ID 32 - Red, Blue, White - Qty 2
	ID 33 - Red, Blue, White - Qty 2
Peak Power Per Light	0.90A
Light Voltage (In Installed System)	10-16Vdc
Control Panel Slide Switch Positions	0, 1, 2, 3
Control Panel Auxiliary Buttons	1-6, Pre-Programmed
Control Panel Siren Buttons	Single Button Siren, Manual, Air Horn
Maximum Switch Current	15A

## Warranty Information

Item Description	Warranty Period
500 Series Siren - Custom Configuration	5 Year Warranty
4" mpower Single Window Shroud	5 Year Warranty
4" mpower Dual Window Shroud	5 Year Warranty
100J Speaker - Custom Configuration	5 Year Warranty
mpower Arrow Kit Module - ID 31	5 Year Warranty
mpower Arrow Kit Module - ID 32	5 Year Warranty
mpower Arrow Kit Module - ID 33	5 Year Warranty
Handheld Control Panel	5 Year Warranty
Power and Light Harness	90 Day Warranty
100J Speaker Harness	90 Day Warranty
Single Shroud Dual-Lock Strip Replacement Kit	No Warranty
Dual Shroud Dual-Lock Strip Replacement Kit	No Warranty
Speaker Bracket U-Bolt Kit	No Warranty
Replacement Wrench and Screwdriver Tool Kit	No Warranty
Replacement SKB Case	Warranty Through SKB (See Below)

## SKB Case Warranty Registration

The SKB case included with the RDK has a limited lifetime warranty through the manufacturer, which includes limited content coverage. In order to utilize SKB's warranty, please go visit the SKB website to register the case.

When asked, the SKB case SKU number is **3i-2215-8**.

Product Registration Website:

<http://www.skbcases.com/sports/support.php?section=registration>

SKB Warranty Coverage and Information:

<http://www.skbcases.com/sports/support.php?section=warranty>

### Assembly & Deployment Video

For a video walk-through of system assembly, and deployment, including tips and tricks, please scan the QR code to the right to go to our website, or go to:

<https://soundoffsignal.com/product/rapid-deployment-kit>





## Rapid Deployment Kit ETRDVK002

## Storage Legend Suggested for shipping/transport when the system is not in use.

### Top Left Opening

- Control amplifier is stored at the bottom in the notched area in the foam.
- (4x) Lighting harnesses are stored at the top.

### Bottom Left Opening

- (2x) Assembled double-wide shrouds with mpower lights at the bottom.
- (2x) Assembled single wide shrouds with mpower lights at the top.



### Top Right Opening

- Siren Speaker is stored at the bottom, with the bracket bolts lined up with the two notches in the foam.
- (2x) Hardware clamps stored in a bag at the bottom.
- Siren wiring harness stored at the top.
- Control panel and cabling stored at the top.

### Bottom Left Opening

- Additional Dual-Lock patches stored at the bottom
- Tools stored at the top.