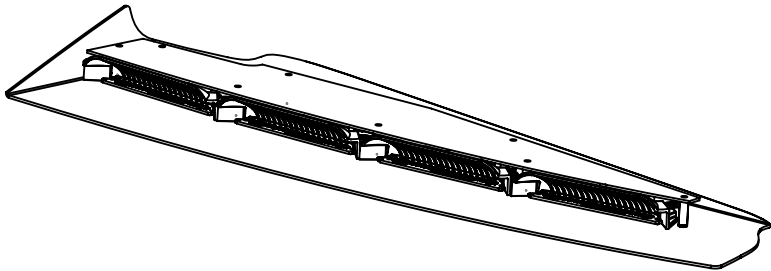




## nFORCE LED Interior Lightbar Direct Connect



**IMPORTANT NOTICE TO INSTALLER:** Make sure to read and understand all instructions and warnings before proceeding with the installation of this product. Ensure that the manual and any warning cards are delivered to the end user of this equipment. Proper installation of the lightbar requires the installer to have a thorough knowledge of automotive electronics, systems, and procedures. Lightbars provide an essential function of an effective visual warning system. The use of the lightbar does not insure that all drivers can or will abide by or react to an emergency warning signal, especially at high rates of speeds or long distances. The operator of the vehicle must never take the right of way for granted and it is the operator's responsibility to proceed safely. The effectiveness of the lightbar is highly dependant on the correct mounting and wiring. The installer must read and follow the manufacturer's installation instructions and warnings in the manual. The vehicle operator should verify daily that the lightbar is securely fastened to the vehicle and properly functioning before operating vehicle. The lightbar is intended for use by authorized personnel only. It is the user's responsibility to ensure they understand and operate the emergency warning devices in compliance with the applicable city, state and federal laws and regulations. SoundOff Signal assumes no liability for any loss resulting from the use of this warning device.

### Components/Contents

Standard Equipment:

- 1 - nForce™ LED Interior Lightbar built to your specifications
- 1 - Mounting Hardware

### Unpack Lightbar

1. Remove the lightbar from box and packaging.
2. Save packaging for later shipping.
3. Check components/contents.
4. Please reference these instructions for proper wiring and installation.



1.800.338.7337 / www.soundoffsignal.com

## TABLE OF CONTENTS

PAGE	CONTENT
1	COMPONENTS/ CONTENTS
2	TECHNICAL/ POWER SPECIFICATIONS
3-6	ELECTRICAL INSTALLATION
7	LIGHT MODULE WIRE HARNESS LOCATIONS & DRIVER MODULE REPLACEMENT
8	NFORCE TROUBLESHOOTING
9	REPLACEMENT PARTS
10	WARRANTY AND RETURN GOODS PROCEDURE

### **⚠ WARNING**

- HIGH CURRENT interconnects must be properly terminated. Poor crimp quality can cause heat build-up and fire. Follow crimp connector manufacturer instructions.
- DO NOT install this product or route any wires in the Air Bag Deployment Zone. Refer to vehicle Owner's Manual for deployment zones.
- Do NOT use system to disconnect headlights, brake lights or other safety equipment.
- Unit may become hot to touch during normal operation.
- Failure to properly install connectors, fuses or wiring may cause vehicle failure or fire.
- Installation must only be performed by trained technician. Installer must determine vehicle wiring configuration and proper integration of system.
- Use proper wire gauge. All power wires connecting to positive (+) or negative (-) battery terminal or local chassis ground (-) must be sized to supply at least 125% of max. current and properly fused at power source.
- Install protective grommets when routing wire through firewall or metal.

**⚠ WARNING**

This product contains high intensity LED devices. To prevent eye damage, DO NOT stare into the light beam at close range.

### **NOTICE:**

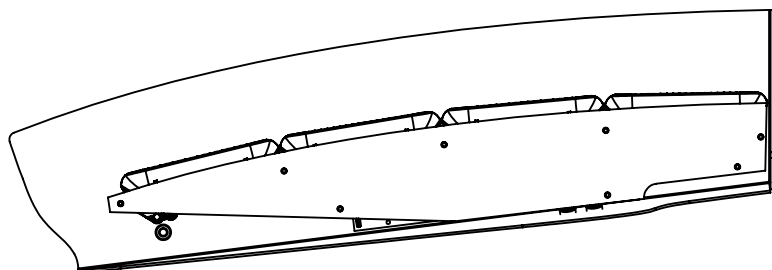
Installers and users must comply with all applicable federal, state and local laws regarding use and installation of warning devices.

*Improper use or installation may void warranty coverage. To review our Limited Warranty Statement & Return Policy for this or any SoundOff Signal product, visit our website at [www.soundoffsignal.com/support/tech-services/warranty-policy](http://www.soundoffsignal.com/support/tech-services/warranty-policy). If you have questions regarding this product, contact **Technical Services**, Monday - Friday, 8 a.m. to 5 p.m. or after hours 5 p.m. to 8 p.m. ET at 1.800.338.7337 (press #4 to skip the automated message). Questions or comments that do not require immediate attention may be emailed to [techservices@soundoffsignal.com](mailto:techservices@soundoffsignal.com).*

SUPERIOR CUSTOMER RELATIONSHIPS. SMARTLY DESIGNED LIGHTING & ELECTRONIC SOLUTIONS.

**TOP VIEW WITH COVER ON**

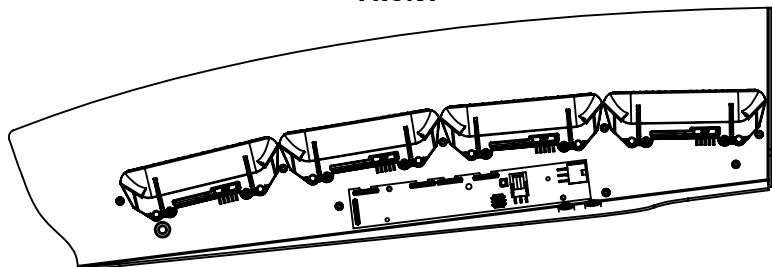
**FRONT**



**REAR**

**TOP VIEW WITH COVER OFF**

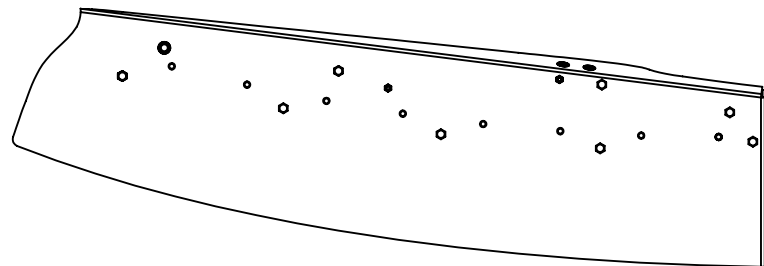
**FRONT**



**REAR**

**BOTTOM VIEW**

**REAR**



**FRONT**

**TECHNICAL SPECIFICATIONS**

Material:	Powder Coated Sheet Steel
Operating Temperature:	-40° to +85° C

**POWER SPECIFICATIONS**

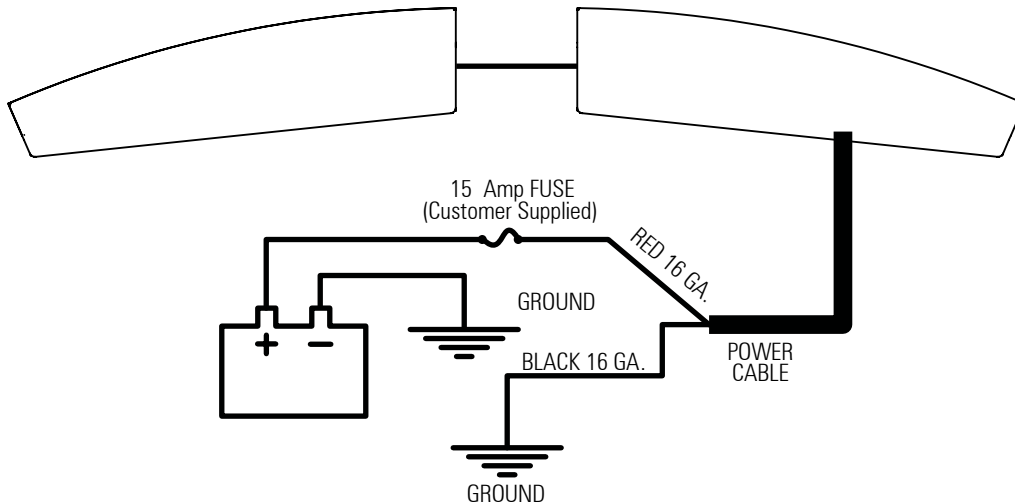
Input Voltage Range:	10 -16 Vdc			
Light Bar Component	Current Draw (Average = Flashing)		Power Consumption (Watts)	
	Ignition ON	Ignition OFF	Ignition ON	Ignition OFF
Standby Current	0.010 Amps	0.002 Amps	0.13 Watts	0.03 Watts
6 LED Module	0.5 Amps Flash 1.0 Amp Peak		6.4W Avg. 12.8W Peak	
9 LED Module	0.75 Amps Flash 1.5 Amp Peak		9.6W Avg. 19.2W Peak	
Reverse Polarity	Protected			
Load Dump	Protected			
Wiring	Power/Control Cable 15ft 12 conductor, 16AWG Power and Ground wires, 22AWG Control wires			

**NOTICE:**

Installers and users must comply with all applicable federal, state and local laws regarding use and installation of warning devices.

Improper use or installation may void warranty coverage. To review our Limited Warranty Statement & Return Policy for this or any SoundOff Signal product, visit our website at [www.soundoffsignal.com/support/tech-services/warranty-policy](http://www.soundoffsignal.com/support/tech-services/warranty-policy). If you have questions regarding this product, contact **Technical Services**, Monday - Friday, 8 a.m. to 5 p.m. or after hours 5 p.m. to 8 p.m. ET at 1.800.338.7337 (press #4 to skip the automated message). Questions or comments that do not require immediate attention may be emailed to [techservices@soundoffsignal.com](mailto:techservices@soundoffsignal.com).

## nFORCE LED Interior Lightbar Direct Connect



### Power Cable:

1. Route lightbar power cables as close to vehicle's power source (battery) as possible.
2. Connect the RED wire to the POSITIVE (+) terminal of the battery or other high current source.
3. Connect the BLACK wire to the factory chassis ground right next to the battery or other ground location capable of handling high current.
4. Connect all other colors, besides WHITE, to +Vdc for desired operation. Make sure connection is insulated from other wire connections and vehicle ground.
5. WHITE wire is used for programming/setup only. Once complete, blunt cut and tape to ensure programming mode is not changed unintentionally.

## ⚠ WARNING

ALL CUSTOMER SUPPLIED POWER WIRES CONNECTING TO THE POSITIVE (+) OR NEGATIVE (-) BATTERY TERMINAL OR LOCAL CHASIS GROUND (-) MUST BE SIZED TO SUPPLY AT LEAST 125% OF THE MAXIMUM CURRENT AND PROPERLY FUSED AT THE POWER SOURCE WITH APPROPRIATELY RATED FUSE.

## WIRING

WIRE COLOR:	GAUGE	FRONT			REAR	
		SOS FUNCTION	STANDARD	STT MODE		
RED	16AWG	Full Time +12V	Full Time +12V	Full Time +12V		
BLUE	22AWG	(+) Front Warning Mode 1, Warning Mode 3 when Warning Mode 2 is also active	(+) Rear Warning Mode 1. Warning Mode 3 when Warning Mode 2 is also active.	(+) Rear Warning Mode 1		
BROWN/WHITE	22AWG	(+) Steady ON 1 (CAT13)	"(+) Right Arrow Center Out when Left Arrow is also active."	"(+) Right Arrow Center Out when Left Arrow is also active."		
RED/WHITE	22AWG	(+) Steady ON 2	"(+) Left Arrow Center Out when Right Arrow is also active."	"(+) Left Arrow Center Out when Right Arrow is also active."		
BROWN	22AWG	(+) Takedowns	(+) Work Lights	(+) Work Lights		
BLACK	16AWG	Ground	Ground	Ground		
ORANGE	22AWG	(+) Front Warning Mode 2, Warning Mode 3 when Warning Mode 1 is also active	(+) Rear Warning Mode 2. Warning Mode 3 when Warning Mode 1 is also active.	(+) Stop/Turn Right		
PURPLE	22AWG	(+) Low Power	(+) Low Power	(+) Low Power		
GREEN/WHITE	22AWG	(+) Scene	(+) Scene	(+) Stop/Turn Left		
GREEN	22AWG	LIN/Factory prgm/test	LIN/Factory prgm/test	LIN/Factory prgm/test		
WHITE	22AWG	(-) Pattern Select	(-) Pattern Select	(-) Pattern Select		
BLACK/WHITE	22AWG	(+) Cruise Lights	(+) Cruise Lights	(+) Tail Lights		



## nFORCE LED Interior Lightbar Direct Connect

### LED Lightbar

#### Warning Flash Pattern Configuration:

- Apply power to product.
- Connect desired function wire(s) to power (i.e. Front Warning, Rear Warning.)
- Momentarily connect Pattern Select wire to GND for defined amount of time to change the flash pattern or set up function mode per table below.
- State is programmed upon releasing the pattern select wire from GND.
- If pattern is changed, the pattern number will flash on inboards 2 & 3 with "10s" flashed on inboard 3 and "1s" flashed on inboard 2.

Warning Pattern Set-Up Table			
Time	Output	Action	Action w/Takedown/Work Light Active*
≤1 sec	High	Forward 1 pattern	Takedown will flash with warning
1 to ≤2 sec	Low	Backward 1 pattern	Takedown will not flash with warning
2 to ≤3 sec	OFF	Reset to default pattern (takedown doesn't change)	Reset to default takedown setting (pattern doesn't change)
3 to ≤4 sec	High	Forward 1 Phase Mode	No effect - return to normal operation
4 to ≤5 sec	Low	Forward 1 Color Mode	No effect
5 to ≤6 sec	OFF	Reset to default phase & color setting	No effect
>6 sec	Normal	No action taken. No pattern change will occur	No effect

\*Not applicable on Dual Color

#### Arrow Flash Pattern Configuration:

- Apply power to product.
- Connect desired function wire(s) to power (Left Arrow, Right Arrow or both for Center Arrow.)
- Momentarily connect Pattern Select wire to GND for defined amount of time to change the flash pattern or set function mode per table below.
- State is programmed upon releasing the pattern select wire from GND.
- If pattern is changed, the pattern number will flash on inboards 2 & 3 with "10s" flashed on inboard 3 and "1s" flashed on inboard 2.

Arrow Set-Up Table		
Time	Output	Action
≤1 sec	High	Forward 1 pattern
1 to ≤2 sec	Low	Backward 1 pattern
2 to ≤3 sec	OFF	Reset to default pattern (takedown doesn't change)
3 to ≤4 sec	High	No effect
4 to ≤5 sec	Low	Set arrow to length
5 to ≤6 sec	OFF	Reset to default settings
>6 sec	Normal	No action taken. No pattern change will occur

#### NOTICE:

Installers and users must comply with all applicable federal, state and local laws regarding use and installation of warning devices.

Improper use or installation may void warranty coverage. To review our Limited Warranty Statement & Return Policy for this or any SoundOff Signal product, visit our website at [www.soundoffsignal.com/support/tech-services/warranty-policy](http://www.soundoffsignal.com/support/tech-services/warranty-policy). If you have questions regarding this product, contact **Technical Services**, Monday - Friday, 8 a.m. to 5 p.m. or after hours 5 p.m. to 8 p.m. ET at 1.800.338.7337 (press #4 to skip the automated message). Questions or comments that do not require immediate attention may be emailed to [techservices@soundoffsignal.com](mailto:techservices@soundoffsignal.com).

SUPERIOR CUSTOMER RELATIONSHIPS. SMARTLY DESIGNED LIGHTING & ELECTRONIC SOLUTIONS.



**nFORCE LED Interior Lightbar Direct Connect**  
LED Lightbar

fpm=Flashes per Minute  
fps=Flashes per Second

**FLASH PATTERNS**

Default

#	Name	SAE Compliant	Cal. Title 13 Compliant	Phase*	fpm	fps
1	RandomAction 1	Y		Variable		
2	RandomAction 2			Variable		
3	RandomAction 3			Variable		
4	RandomAction 4		Y	Variable		
5	Quint	Y		Programmable	67	1.1
6	Quad2	Y		Programmable	67	1.1
7	Q-Switch™	Y		Programmable		
8	Double2	Y		Programmable	115	1.9
9	Power Pulse	Y		Programmable	188	3.1
10	Road Runner	Y	Y	Programmable	115	1.9
11	Slow Runner	Y	Y	Programmable	70	1.2
12	Warp			Programmable	333	5.6
13	Intercycle			Programmable	67 & 333	1.1 & 5.6
14	Warp 1, 2, 3			Programmable	115 - 333	1.9 - 5.6
15	E-Single			Programmable		
16	E-Double			Programmable		
17	E-Triple			Programmable		
18	Cross-Fire			2X Individual Sweep		
19	Super Scan			Dual Rate Pulse/Alt		
20	Power Flash			Dual Rate Alt/Pulse		
21	Thunder and Lightning			Random		
22	Steady ON			60% DC		
23	OFF			OFF		

\*Refer to Phase Mode table for Programmable Phases

**ARROW PATTERNS**

#	Name	SAE Compliant Timing	California Title 13 Compliant Timing	Color	Sequence	fpm	fps
1	Single Fast	No	No	-	-	-	-
2	Single Slow	No	No	-	-	-	-
3	Chaser Fast	No	No	-	-	-	-
4	Chaser Slow	No	No	-	-	-	-
5	Fill Fast	No	No	-	-	-	-
6	Fill Slow	No	No	-	-	-	-
7	Grow/Shrink	No	No	-	-	-	-
8	Warning w/Arrow	No	No	-	-	-	-
9	Warning w/Arrow Fill	No	No	-	-	-	-
10	Arrow Random 1	No	No	-	-	-	-
11	Arrow Random 2	No	No	-	-	-	-

**COLOR MODE**

#	Color Mode	Requirements
1	Color 1 (Primary)	Single or dual color
2	Color 2	Dual color
3	Color 1 and 2	Dual color
4	Color 1 w/ White Pop (only available on flash patterns 1-17)	Dual color

**PHASE MODE**

#	Phase
1	Variable: Alt L/R, Alt Int, Alt In/Out
2	Alt In/Out
3	Alt L/R



## nFORCE LED Interior Lightbar Direct Connect

### Takedown and Work-light Configuration:

- Apply power to product.
- Connect takedown / worklight input to power.
- Momentarily connect Pattern Select wire to GND for defined amount of time to change the takedown/worklight setting per table to the right.
- State is programmed upon releasing the pattern select wire from GND.

Takedown/Work Light Mode	
Mode #	Position
1	L1,R1
2	L2,R2
3	L3,R3
4	L4,R4
5	L1,L2,R2,R1
6	L1,L3,R3,R1
7	L1,L4,R4,R1
8	L2,L3,R3,R2
9	L2,L4,R4,R2
10	L3,L4,R4,R3
11	None

Position Key	
L(X)	Driver Inboard 1-4
R(X)	Passenger Inboard 1-4

### Scene light Configuration:

- Determine which modules are used for Scene Lighting.
- Connect Scene input to power.
- Momentarily connect Pattern Select wire to GND for defined amount of time to change the settings per table to the right.
- For single color, scene input will mirror takedown/worklight input. To change scene mode#, takedown/work light mode# must be changed.

Takedown/Work Light and Scene Set-Up		
Time	Output	Action
≤ 1 sec	High	Forward 1 mode
1 to ≤ 2 sec	Low	Backward 1 mode
2 to ≤ 3 sec	OFF	Reset to default settings
> 3 sec	High	No action taken. Return to normal operation

Scene Module Set-Up	
Mode #	Position
1	L1,L2,L3,L4,R4,R3,R2,R1
2	L1,L2,L3,R3,R2,R1
3	L1,L2,R2,R1
4	L1,R1

### Cruise Configuration:

- Apply power to product.
- Connect cruise input to power.
- Momentarily connect Pattern Select wire to GND for defined amount of time to change the cruise setting per table below.
- State is programmed upon releasing the pattern select wire from GND.

Cruise Set-Up		
Time	Output	Action
≤ 1 sec	High	Forward 1 mode
1 to ≤ 2 sec	Low	Backward 1 mode
2 to ≤ 3 sec	OFF	Reset to default settings
3 to ≤ 4 sec	High	Cruise set to solid on
4 to ≤ 5 sec	Low	Cruise set to flicker
5 to ≤ 6 sec	OFF	Increment brightness (3%-8% duty cycle)
> 6 sec	Normal	No action taken. Return to normal operation

Cruise Mode Set-Up	
Mode #	Position
1	L1,L2,L3,L4,R4,R3,R2,R1
2	L1,L2,L3,R3,R2,R1
3	L1,L2,R2,R1
4	L1,R1

Cruise Patterns	
#	Phase
1	Constant On
2	Flicker

### Steady On 1 and 2 Configuration:

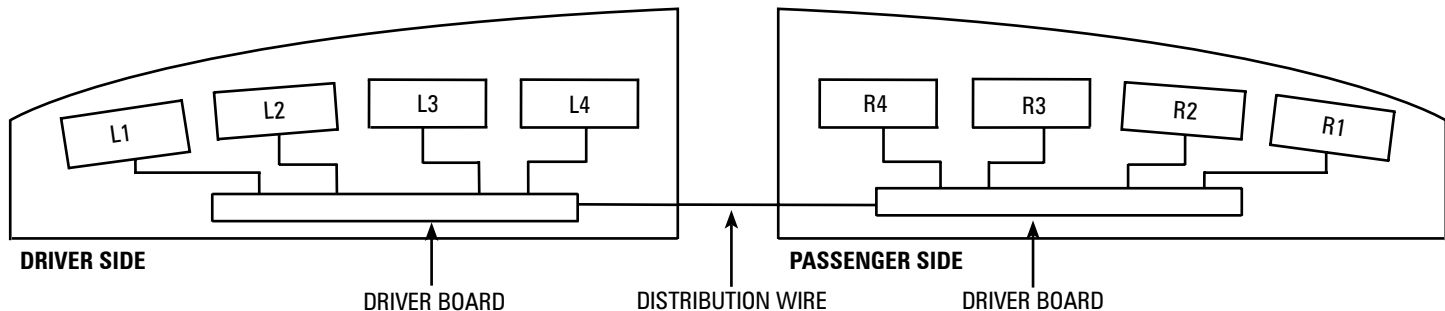
- Apply power to product.
- Connect steady on 1 or steady on 2 input to power.
- Momentarily connect Pattern Select wire to GND for defined amount of time to change the steady on 1 or steady on 2 setting per table to the right.
- State is programmed upon releasing the pattern select wire from GND.

Steady On 1 and 2 Set-Up		
Time	Output	Action
≤ 1 sec	High	Forward 1 mode
1 to ≤ 2 sec	Low	Backward 1 mode
2 to ≤ 3 sec	OFF	Reset to default settings
3 to ≤ 4 sec	High	Forward 1 color mode
4 to ≤ 5 sec	Low	Backward 1 color mode
5 to ≤ 6 sec	OFF	No effect
> 6 sec	Normal	No effect. Return to normal operation

Steady On 1 and 2 Mode	
Mode #	Position
1	L1
2	L2
3	L3
4	L4
5	R4
6	R3
7	R2
8	R1

#	Color Mode	Requirements
1	Color 1	Single or dual color
2	Color 2	Dual color

## **LIGHT MODULE WIRE HARNESS LOCATIONS**



### **REPLACEMENT OF INBOARD MODULES:**

1. Disconnect main power.
2. Remove top cover by removing screws.
3. Locate module and remove mounting nuts. Remove module from lightbar.
4. Remove connector from rear of module by carefully pulling connector body from back of module.
5. Push module connector into replacement module ensuring locking latch is seated properly or connector is fully seated.
6. Replace module and hardware that fasten module to shroud.
7. Restore power to bar and test new module to ensure functionality.
8. Replace top cover of bar with screws removed in step 2.

### **Driver Module Replacement:**

- a. Verify power has been removed from lightbar before attempting service.
- b. Remove cover.
- c. Unplug 12 pin power connector and LED module connectors from driver module assembly, noting location.
- d. Remove driver module.
- e. Attach new driver module assembly into housing.
- f. Plug 12 pin power connector and LED module connectors into driver module assembly.
- g. Set DIP switches according to desired function.
- h. Apply power to lightbar and verify proper operation.

### **NOTICE:**

Installers and users must comply with all applicable federal, state and local laws regarding use and installation of warning devices.

*Improper use or installation may void warranty coverage. To review our Limited Warranty Statement & Return Policy for this or any SoundOff Signal product, visit our website at [www.soundoffsignal.com/support/tech-services/warranty-policy](http://www.soundoffsignal.com/support/tech-services/warranty-policy). If you have questions regarding this product, contact **Technical Services**, Monday - Friday, 8 a.m. to 5 p.m. or after hours 5 p.m. to 8 p.m. ET at 1.800.338.7337 (press #4 to skip the automated message). Questions or comments that do not require immediate attention may be emailed to [techservices@soundoffsignal.com](mailto:techservices@soundoffsignal.com).*

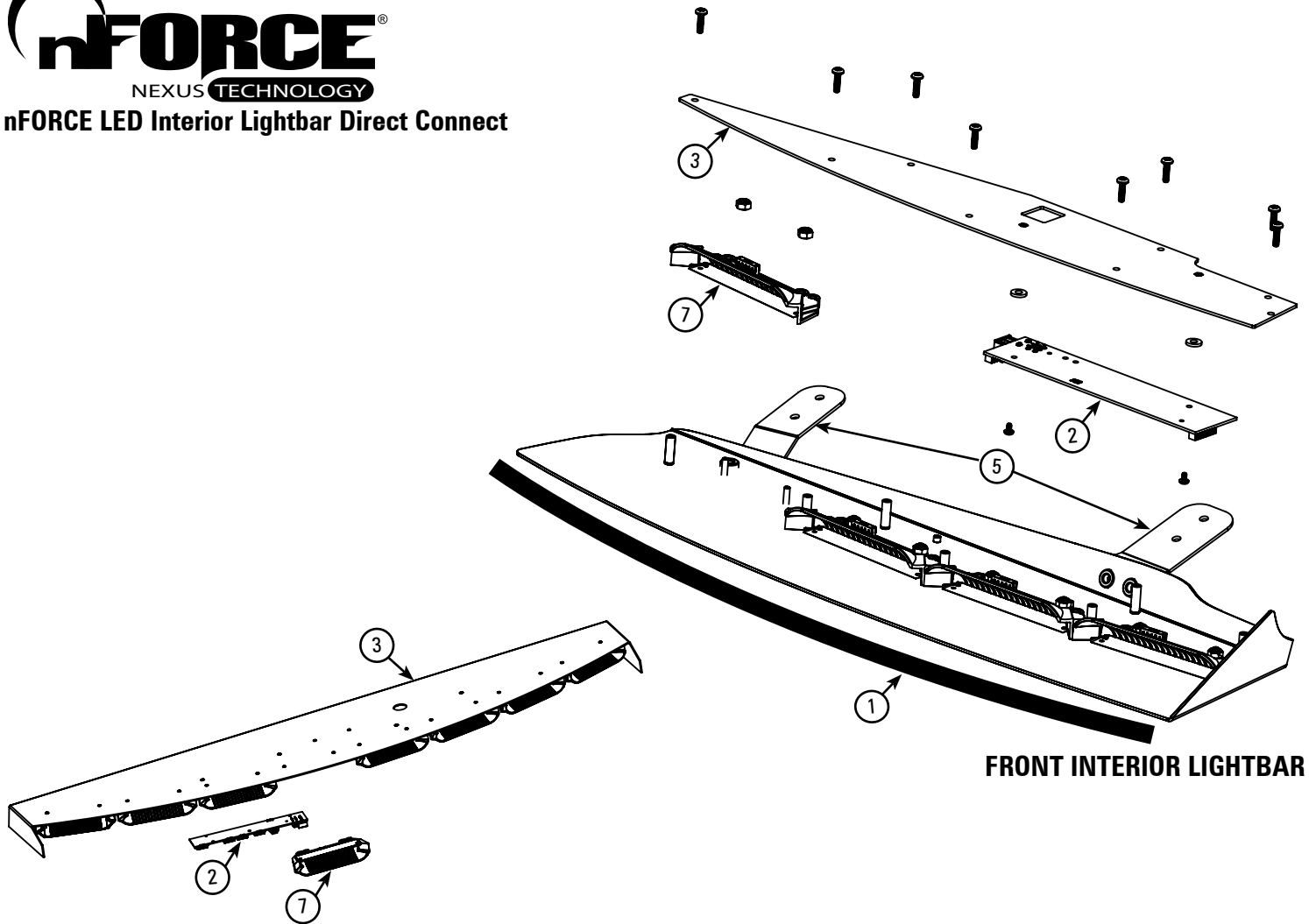
## nForce TROUBLESHOOTING

FAILURE	CAUSE	RESOLUTION
No Failure	Normal Operation	Under Normal operation the lightbar will Flash when a combination of the RED, BLUE, BROWN, or ORANGE wires are connected to +Vdc
No Operation	No power	Check RED wire is connected to +Vdc and BLACK wire is connected to ground
		Verify Internal Fuse is not blown and a minimum of 10.0Vdc is present on the RED wire
No or Incorrect Warning Lights	No Warning 1 or Warning 2 output	Verify BLUE and ORANGE wire are not open and have +Vdc at driver board
	Flash Settings	Verify flash settings (Not No-Flash)
Incorrect Arrow Function (Rear Lightbar)	Left/Right operation must be swapped	Connect BROWN/WHITE, RED/WHITE, PURPLE and GREEN/WHITE to +Vdc then tap WHITE wire to ground to swap left/right operation
No Arrow Operation (Rear Lightbar)	No or incorrect arrow function	Ensure set for rear operation and not front
No Takedown Lights	No steady or Flashing operation	Verify takedown modules are configured correctly <b>See Tables on Page 6</b>
No R1 and L1 Lights	Improper DIP switch settings	Verify DIP switches are set correctly; Rear STT mode reserves inboards R1 and L1 for Stop/Turn Mode

MASTER SWITCH SETTINGS			
SW1	SW2	SW3	Purpose
Off			Master
On			Slave
	Off		Single color
	On		Dual color
		Off	Front (input controls)
		On	Rear (input controls)

SLAVE SWITCH SETTINGS			
SW1	SW2	SW3	Purpose
Off			Master
On			Slave
	Off		Rear STT (forces arrow to be 6 mod)
	On		Standard rear warning control
		Off	6 Module Length (L4& R4 removed)
		On	8 Module Length





FRONT INTERIOR LIGHTBAR

REAR INTERIOR LIGHTBAR

**REPLACEMENT PARTS & ACCESSORIES**

ITEM #	PART#	DESCRIPTION
1	PNFWBTE003	TRIM EDGE
2	PNFWBDRV02	DRIVER BOARD
	PNFWBHNP03	POWER HARNESS
3	PNFWBB(XXX)0(X)-(X)	SHROUD KIT
5	PNFWBMFP(X)0(X)	MOUNT KITS
	PNFWBMFS(XX)0(X)	MOUNT KITS – PASSENGER
	PNFWBMRF(X)0(X)	REAR MOUNT KITS
	PEPL8M14	UNIVERSAL MOUNT KIT
7	PNFWBLS106(x)	6 LED INBOARD MODULE
7	PNFWBLS109(x)	9 LED INBOARD MODULE
	PNFWBHNJ01	POWER JUMPER HARNESS
	PNFWBHNM0(x)	MODULE HARNESS

**NOTICE:**

Installers and users must comply with all applicable federal, state and local laws regarding use and installation of warning devices.

Improper use or installation may void warranty coverage. To review our Limited Warranty Statement & Return Policy for this or any SoundOff Signal product, visit our website at [www.soundoffsignal.com/support/tech-services/warranty-policy](http://www.soundoffsignal.com/support/tech-services/warranty-policy). If you have questions regarding this product, contact **Technical Services**, Monday - Friday, 8 a.m. to 5 p.m. or after hours 5 p.m. to 8 p.m. ET at **1.800.338.7337** (press #4 to skip the automated message). Questions or comments that do not require immediate attention may be emailed to [techservices@soundoffsignal.com](mailto:techservices@soundoffsignal.com).



nFORCE LED Interior Lightbar Direct Connect

**WARRANTY & RETURN GOODS PROCEDURE**

**MOUNTING INTEGRITY:**

A review of bolt/hardware/mounting bracket integrity should be performed at the beginning and end of each shift.

**WARNING MESSAGES - PLEASE READ:** \_\_\_\_\_

**WARNING** - DRILLING ANY HOLES INTO THE LIGHTBAR IS NOT RECOMMENDED! THE RISK OF DAMAGING INTERNAL COMPONENTS AND THE RESULTING FAILURE OF THE LIGHTBAR WILL VOID ANY WARRANTY OF THIS PRODUCT.

**WARNING** - CARE MUST BE TAKEN WHEN DRILLING THROUGH THE ROOF OF THE VEHICLE NOT TO DRILL INTO ANY EXISTING WIRING AND NOT TO DRILL THROUGH THE HEADLINER OR SUPPORT MEMBERS OF THE VEHICLE. CHECK BOTH SIDES OF THE MOUNTING SERVICE PRIOR TO DRILLING. DE-BURR ANY HOLES AND REMOVE ANY METAL SHARDS OR REMNANTS. INSTALL GROMMETS INTO ALL WIRE PASSAGE HOLES.

**WARNING** - ROUTE WIRES ONLY IN LOCATIONS THAT ARE NOT SUBJECTED TO POTENTIAL WEAR. MAKE SURE TO AVOID ROUTING WIRES IN THE DEPLOYMENT AREA OF YOUR AIR BAG. REFER TO YOUR VEHICLE OWNER'S MANUAL FOR AIR BAG DEPLOYMENT ZONES.

**WARNING** - ALL CUSTOMER SUPPLIED POWER WIRES CONNECTING TO THE POSITIVE (+) OR NEGATIVE (-) BATTERY TERMINAL OR LOCAL CHASSIS GROUND (-) MUST BE SIZED TO SUPPLY AT LEAST 125% OF THE MAXIMUM CURRENT AND PROPERLY FUSED AT THE POWER SOURCE WITH APPROPRIATELY RATED FUSE.

**IMPORTANT:** When passing cables through fire wall or other sheet metal, insert grommet to protect the cable!

**WARRANTY RETURN PROCESS:**

Please contact your SoundOff Signal Sales Representative, Customer Services staff or our Technical Department (800.338.7337) for a RMA #, Return Merchandise Authorization Number.

The following information is required for issuance of the RMA #:

- Reason for returning the product\*
- Address where replacement product is to be shipped\*
- Telephone number where you may be reached\*
- SoundOff Signal invoice number on which product was purchased\*\*
- SoundOff Signal part number and serial number\*\*
- E-mail address where RMA # should be e-mailed\*\*
- Fax number where RMA # should be faxed\*\*

\* RMA # will not be given without this information.

\*\* If available, please provide this information.

SoundOff Signal will NOT accept returns without an RMA #. Each RMA # is good for only one (1) return and will expire (10) days after the date it was issued. Products must be shipped back to SoundOff Signal and the RMA # clearly marked on the outside of the package near the shipping label. Please use the following address on your shipping label:

SoundOff Signal  
ATTN: RMA # / Technical Services  
3900 Central Parkway  
Hudsonville, MI 49426

**WARRANTY EXCLUSIONS:**

Shipping & Handling, labor and service fees are non-refundable. SoundOff Signal is not liable for any damage due to installation or personal injury as a result of using SoundOff Signal product.

**WARRANTY FORFEITURE:**

Warranty will not be granted if the Warranty Return Policy & Procedure rules are not strictly followed. Physical damage resulting from customer abuse will void warranty. Warranty will also be voided if any SoundOff Signal and/or manufacturer serial tags, product stickers, seals, or the like, are removed, altered or tampered with. Returned product that is damaged by shipping via the RMA # procedure is not the responsibility of SoundOff Signal.

Document effective date on cover and below supersedes previously dated policies and statements.

There are no other warranties, expressed or implied, including, but not limited to, any implied merchantability or fitness for a particular use. SoundOff Signal reserves the right to modify this warranty statement at any time; or to discontinue, modify, or upgrade any products of its manufacture with design improvements without prior notice.

**NOTICE:**

Installers and users must comply with all applicable federal, state and local laws regarding use and installation of warning devices.

*Improper use or installation may void warranty coverage. To review our Limited Warranty Statement & Return Policy for this or any SoundOff Signal product, visit our website at [www.soundoffsignal.com/support/tech-services/warranty-policy](http://www.soundoffsignal.com/support/tech-services/warranty-policy). If you have questions regarding this product, contact **Technical Services**, Monday - Friday, 8 a.m. to 5 p.m. or after hours 5 p.m. to 8 p.m. ET at 1.800.338.7337 (press #4 to skip the automated message). Questions or comments that do not require immediate attention may be emailed to [techservices@soundoffsignal.com](mailto:techservices@soundoffsignal.com).*