



Creating possibilities for you to build a smarter, safer and more confident tomorrow.

bluePRINT[®]
automatic logic

SoundOff
Signal [®]
Smart Design.



bluePRINT[®]

automatic logic

A smartly designed control system that automates emergency lighting and siren performance functions.



[bluePRINT video](#)



100 or 200 Watt Remote with Knob Control Siren



Central Controller



Control Panel



Handheld Control



**bluePRINT allows you, the officer, to do what you do...
now in a safer and more efficient working environment.**



100 or 200 Watt Dual-Tone Knob or Button Console Siren
(button console shown)



100 or 200 Watt Dual-Tone Siren



100 Watt Siren
(sealed)



Remote Node
(sealed)



Input Node

bluePRINT[®]

Reduce Distractions

Officers are constantly occupied with technology and other distractions that require a shift in concentration and a refocus of the eyes and hands. bluePRINT allows you to stay focused while keeping your eyes on the road and hands on the wheel.



Issue:

Police officer's use of technology while driving is similar to that of texting and driving.

Implication:

Taking your eyes off the road for five seconds while driving 55 mph is like driving the length of a football field blindfolded.

– *Distractions.gov*

Heads Up, Not Down

Light and siren configurations are pre-programmed and prioritized to respond to emergency situations without the officer having to hastily determine which buttons and switches to activate while driving.



With bluePRINT,
possibilities are
nearly endless.

Improve Intersection Safety

By simply tapping the horn, you can activate a blast of extreme white lighting from the lightbar and grille lights followed by a variety of red/blue flash patterns and unique siren tones.



Issue:

Forty percent of all reported crashes occur at intersections.

– *Federal Highway Administration*

Implication:

Serious injury or death, legalities, property damage and insurance claims.



bluePRINT video

bluePRINT[®]

Every Traffic Stop Comes With its Own Inherent Risks

With bluePRINT, simply activate the Blitz function to instantly activate all emergency lighting and siren to stun the would be offender.

This feature provides the officer with an additional two to three seconds to take appropriate action if necessary.



Fifty percent of the vehicle's emergency lights are always functioning.

Bring Greater Visibility and Awareness to Your Vehicle

A patrol vehicle's presence can be diminished if its emergency lights are not constantly present.

bluePRINT delivers continuous visibility because fifty percent of the vehicle's emergency lights are always functioning...no matter the viewing angle of the vehicle.



fifty



fifty



bluePRINT video

bluePRINT[®]

Improve Visibility After Dark

During multiple vehicle pursuits, the bright flashing lights of leading emergency vehicles can compromise the vision of trailing officers.



Fact:

Viewing the rear of a lightbar during a nighttime multiple vehicle pursuit is comparable to looking into eight high-beam headlights at once.

– *SoundOff Signal*

bluePRINT allows for rear facing lightbar modules and perimeter lights to be shut off or dimmed with the simple press of a button.



bluePRINT video

Add mirror and rear window white lights to the lightbar's alley lights to intensify nighttime illumination.

Intensify Nighttime Illumination

bluePRINT allows you to add mirror and rear window white lights to the lightbar's alley lights to intensify nighttime illumination of back alleys and building fronts while improving the ability to read mailbox addresses.



Implication

Flashing lights from lead patrol vehicles cause vision impairment to trailing officers reducing their ability to effectively maintain control of a situation.

Connect Universal UnderCover Lights to Increase Braking Awareness

bluePRINT allows rearward facing white perimeter lighting and Universal UnderCover lights to be linked with the vehicle's reverse lights for increased visibility when backing up.

Connect Universal UnderCover lights to bluePRINT so that the vehicle's brake lights will increase braking awareness to trailing vehicles.



bluePRINT[®]

Diminish Nighttime Vulnerability

Lightbar corner modules and mirror mounted lights can create a blinding affect to officers when exiting their vehicles or while seeking cover. bluePRINT deactivates corner modules and mirror lights when the driver or passenger door is opened. The modules reactivate when the door is closed.

Issue:

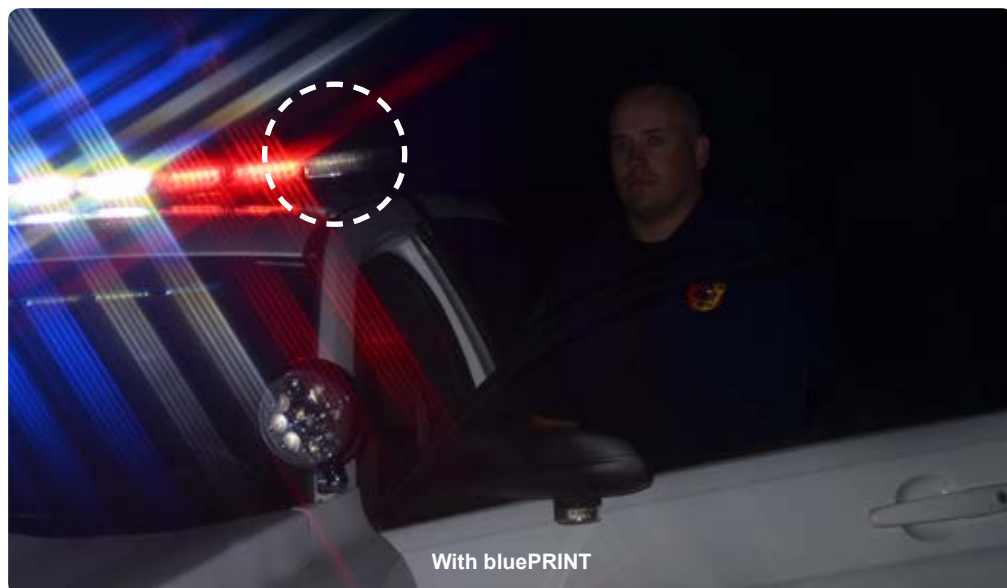
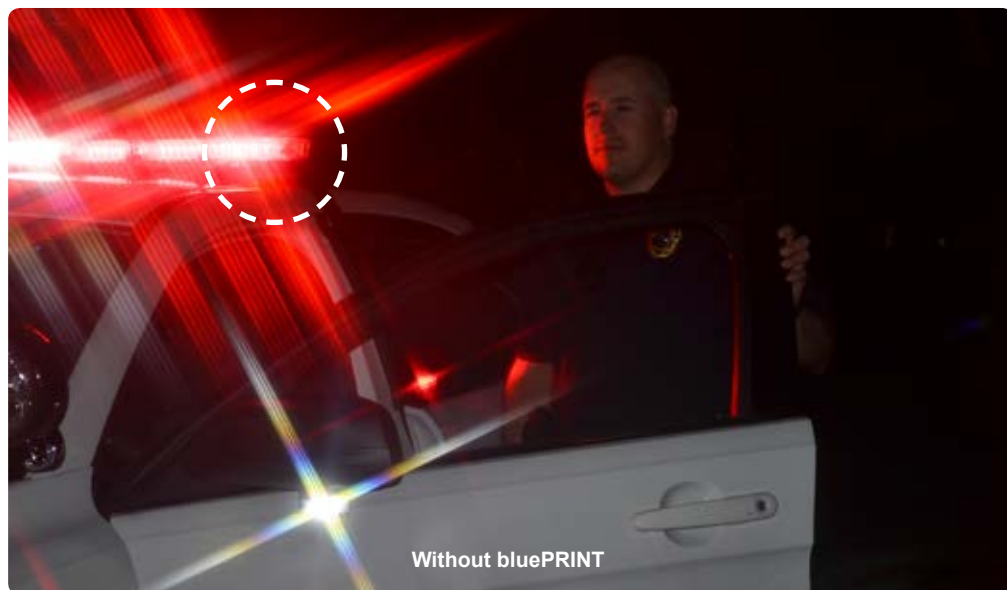
Lightbar corner modules can project approximately 1,800 candela into the eyes of an officer.

Studies have shown it can take up to 25 minutes for eyes to adapt when moving from bright light to darkness.

— Jim Sheedy
Oregon Pacific University

Implication:

Impaired nighttime vision creates an inherent danger to an officer when approaching potentially dangerous subjects in a stopped vehicle.



Corner modules and mirror lights deactivate when the driver or passenger side is opened.

The inability to effectively view a scene or potential target at night creates risk to the officer. With bluePRINT, simply flip the headlight brights on or another input to instantly illuminate scenes with the lightbar's white modules, white grille lighting and spotlight.



Bright flashing lights can adversely affect the vision and concentration of a DUI subject and officers to compromise the situation. bluePRINT eliminates this problem by dimming and “steady burning” front lightbar modules and grille lights.



Fact:

Between 2001 and 2010, 95 officers died during traffic stops and 4,752 were assaulted.

– *Police Law Enforcement Magazine*

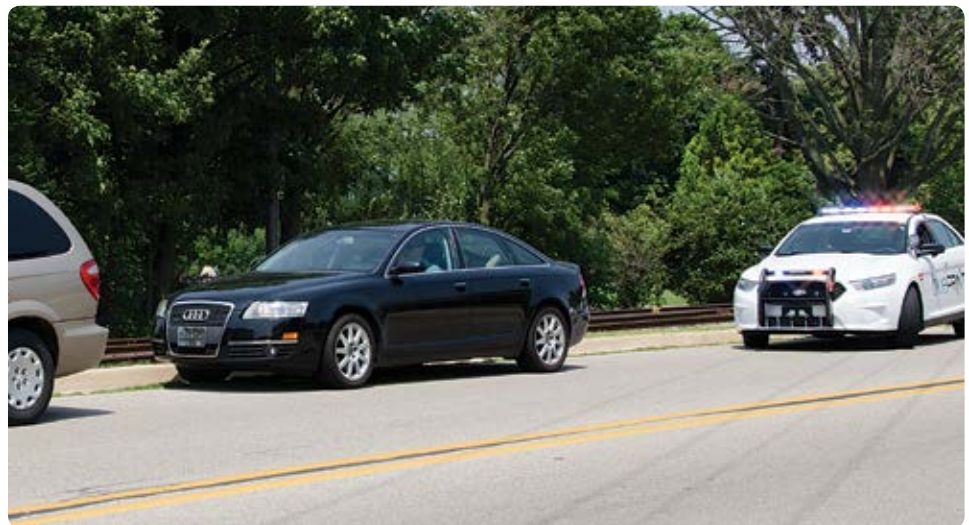
Implication:

Loss of life and personal injury.

bluePRINT®

Attention Grabbing Performance

During emergency runs, officers occasionally deal with drivers who appear to ignore emergency lights and sirens and fail to move out of the way.



With bluePRINT, you can sound the air horn, flash your headlight brights, activate extreme white lighting from the lightbar and grille lights while flashing your spot light to move traffic out of the way...all by simply pressing the horn.

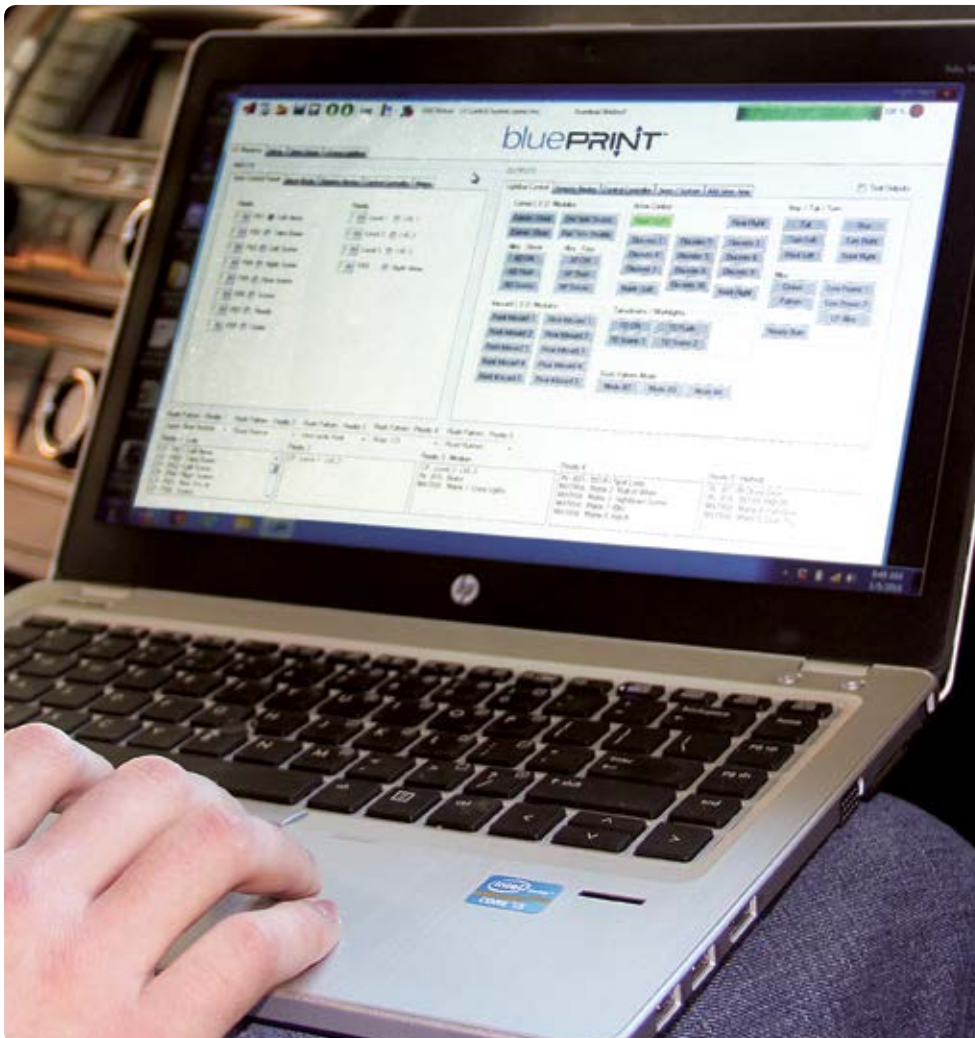


Fleet managers can take advantage of reducing installation time and wiring complexity.

Fleet Manager Advantages

bluePRINT allows for easy diagnostics should a system failure occur down the road. bluePRINT also makes program configuration easy with a Windows® based computer program. The USB port allows for the configuration to transfer from your laptop to the controller.

An agency can ill afford dead batteries in their vehicles. bluePRINT allows all lighting and accessory outputs to be individually timed for load shedding and sleep currents. When your officers switch the ignition to “on”, they’re good-to-go...every time.



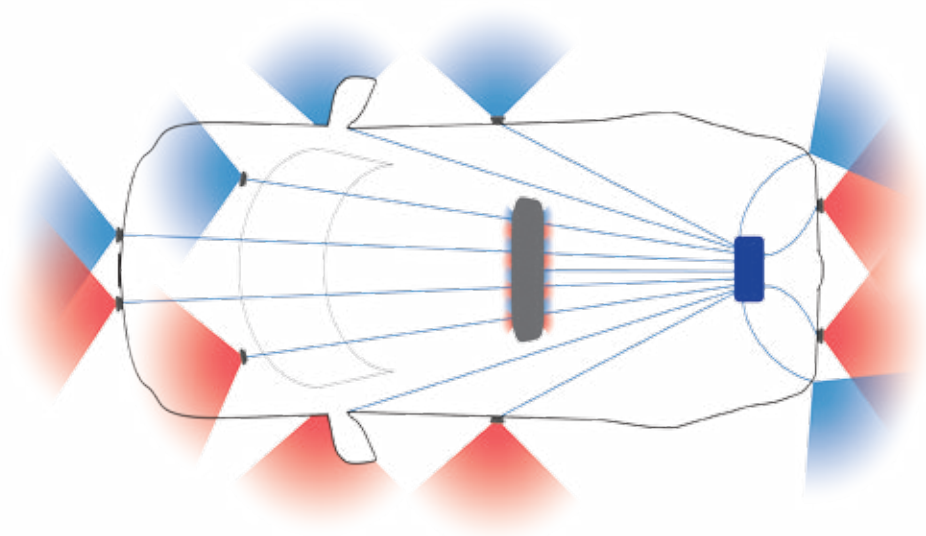


bluePRINT[®]

Before and After bluePRINT

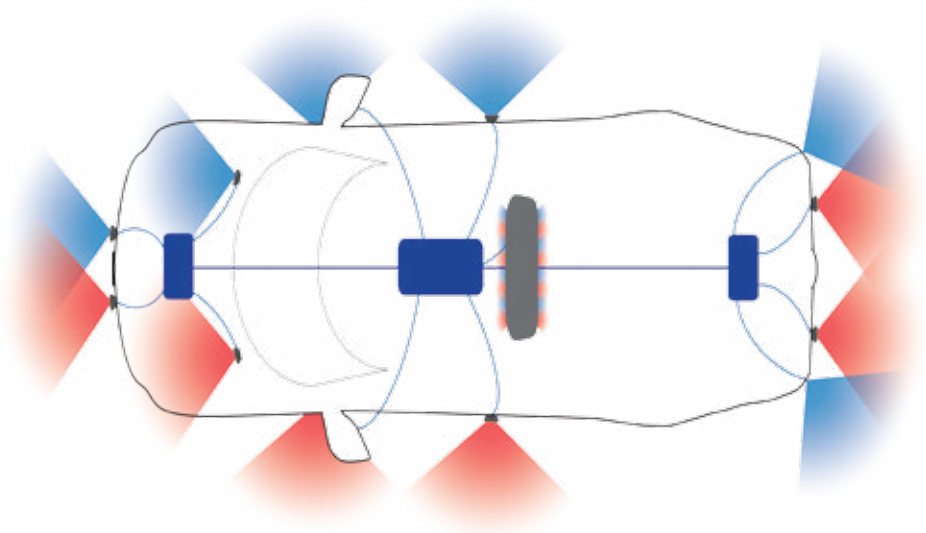
Before

Emergency vehicle installations often centralize connections in the trunk or console resulting in extra wiring and installation time.



After

bluePRINT replaces many of these connections with a multiplexed data bus that allows minimal wiring and ultimate flexibility. The lighting and siren becomes programmable and automated.



Input voltage, operating temperature,
total system inputs and outputs, switching
current and software requirements.



Visit [www.soundoffsignal.com/
sales-support/certified-blueprint-dealers/](http://www.soundoffsignal.com/sales-support/certified-blueprint-dealers/)
for a list of certified bluePRINT dealers in your area.

Technical Specifications

INPUT VOLTAGE 10-16 Vdc (negative ground)

OPERATING TEMPERATURE -40° C to +65° C (remote node up to 85° C)

TOTAL SYSTEM INPUTS **Up to 42 Total Inputs:**

- Central Controller Ignition Input
 - Remote Node: 4 each (up to 5 remote nodes can be used throughout vehicle)
 - Input Node: 20
-

TOTAL SYSTEM OUTPUTS **Up to 86 Total Outputs:**

- Central Controller: Up to 4 constant on and 20 programmable outputs
 - Remote Nodes: 10 each (up to 5 remote nodes can be used throughout vehicle)
 - 400 Series Siren: 12 non-flashing programmable relay outputs and 3, 20 Amp outputs
-

TOTAL SWITCHING CURRENT **Up to 450 Amps Total:**

- Central Controller: 100 Amps total
 - Remote Node: 50 Amps each (up to 5 nodes)
 - 400 Series Siren: 100 Amps total
-

SOFTWARE REQUIREMENTS **PC or Tablet (used only for initial programming and diagnostics):**

- Windows Vista® SP1 or later
 - Pentium 1GHz or higher
 - Minimum 512 MB of RAM
 - Minimum disk space of 1 GB
 - NET 4.5 Library (will be prompted to download if not installed, additional 2 GB needed)
 - USB 1.1 or higher, cable with Type B plug
-